

THARO

PA2000

New, from the creators of **EASYLABEL®**, comes the **Tharo PA2000 Printer/Applicator...**
A powerful accessory for Tharo H-400/
H-600 Series thermal transfer/ direct
thermal bar code label printers

Meet Demanding Applications with Maximum Uptime and Economical, Worry-Free Operation!

■ **Compact** – The PA2000 features a smaller footprint, 15" wide x 32" tall x 30" long, than other Printer/Applicators, with a remote front panel for easy access, regardless of the orientation of the applicator. This allows the PA2000 to be installed in locations where other Printer/Applicators cannot.

■ **Easy To Use** – The Tharo PA2000 Printer/Applicator is easy to use, with minimal adjustments necessary and quick setup and changeover for applying labels to either the top or side of the product.

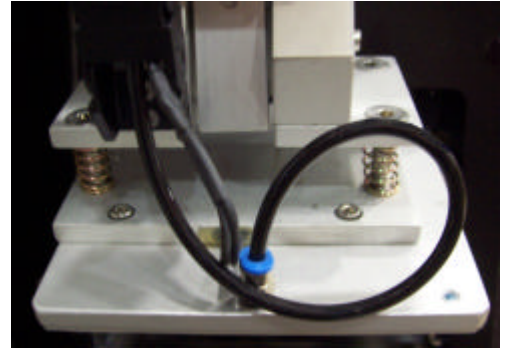
■ **Fast** – The PA2000 is quick and accurate, applying up to 58 labels per minute, depending on label size, printer used, and height of the products. A switching device, such as a foot switch, optical sensor or PLC (Programmable Logic Controller) can be connected to the applicator's PLC port to initiate the print and apply cycle. LEDs provide visual operating status and error conditions.

■ **Cost-effective** – With minimal training, quick integration and increased personal productivity, the PA2000 provides a rapid return on investment. It has an all-metal construction and is made to last with time-tested components.

■ **Controlled Contact** – The use of springs, and an adjustable pressure sensing switch on the tamp pad, allows for very precise label placement and controlled contact.

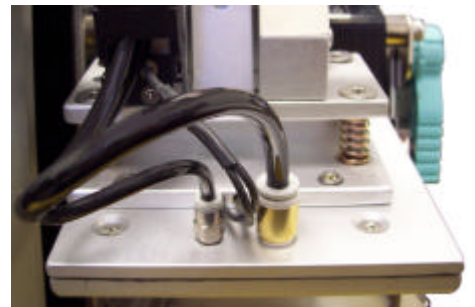
■ **Easy To Service** – The small amount of moving parts, combined with the best technical support in the industry, makes maintaining and servicing the PA2000 quick and easy.

■ **Exceptional Accuracy**
The PA2000 is capable of label placement accuracy within 0.01" for stationary products, or 0.125" for moving



Standard Tamp Pad-

The customizable tamp pad comes pre-fitted with a nonstick plastic surface to suit your labeling needs.



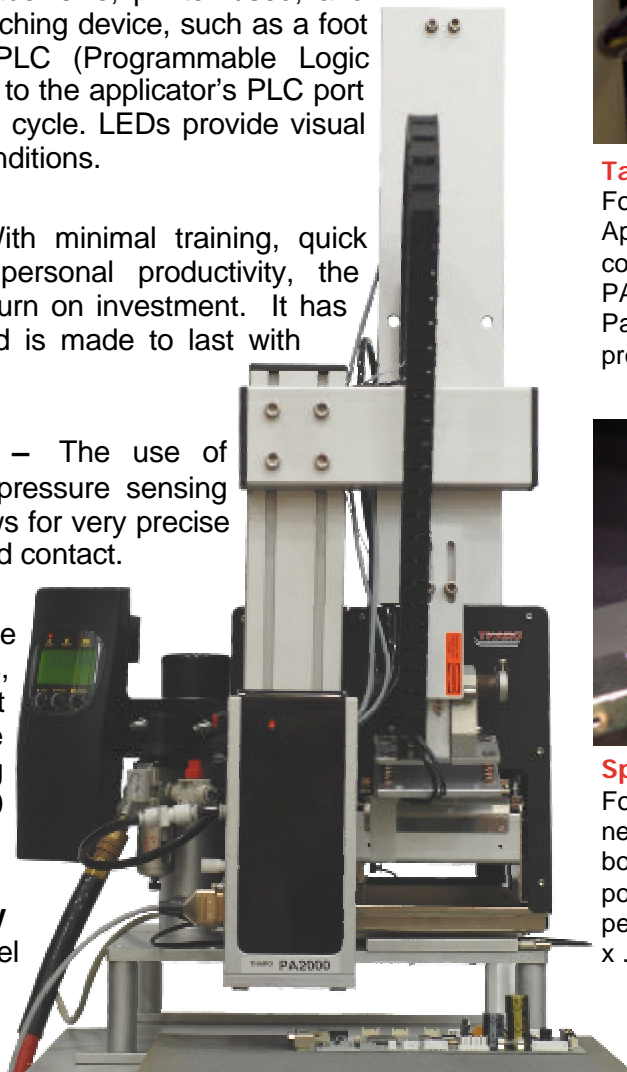
Tamp / Blow Alternative-

For those special jobs where a Tamp Applicator isn't appropriate, such as concave or convex objects, the Tharo PA2000tb will do the trick! The Tamp Pad stops between ½" and 2" from the product, then the label is blown on.



Specialty Tamp Alternative-

For situations where very small labels need to be applied, such as circuit board applications, the PA2000 supports custom Tamp sizes, which will permit labels as small as .20" wide x .20" high.



OPTIONS



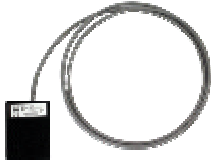
Warning Beacon -

The warning beacon functions as a visual display for applicator and printer errors. Can be used with all of the PA2000 variants.



Product Sensor -

The product sensor functions as an automatic trigger device, which sends a start signal to the applicator. Can be used with all of the PA2000 variants.



Foot Switch -

The foot switch functions as a manual trigger device, which sends a start signal to the applicator when it is pressed. Can be used with all of the PA2000 variants.



Product Sensor Timer -

The product sensor timer is used to delay the application process. Can be used with all of the PA2000 variants.



Hand Cranked Height Adjustable H-base Stand -

Allows for extremely precise height adjustment, while providing stability, and allowing the PA2000 to be used with a conveyor or other automated system.

Locking casters are available for the stand. Can be used with all of the PA2000 variants.

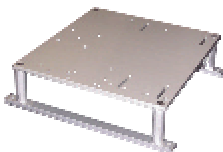


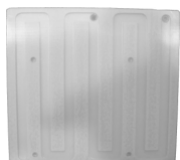
Table-top Stand -

Allows the PA2000 applicator to be placed on a table as an alternative to the H-Base Stand. Can be used with all of the PA2000 variants.



External Unwind/Rewind -

Accommodates up to 14" OD roll of label stock, and allows for quick replacement of media, which helps keep downtime to a minimum. Can be used on all 4 inch wide variants of the PA2000 except the Specialty Tamp.



Universal Tamp Pad -

Provides the flexibility of being able to print and apply labels of varying sizes without having to change tamp pads. A tamp pad and Applicator firmware upgrade is included.

SPECIFICATIONS

Minimum Label Sizes:

Specialty Tamp: .20" x .20" (5mm x 5mm)

Tamp: 2" x 1" (50.8mm x 25.4mm)

Tamp/Blow 3" x 1" (76.2mm x 25.4mm)

Maximum Label Size:

H-427/H-436: 4.5" x 8.0" (114mm x 203mm)

H-626/H-634: 6.0" x 8.0" (152.4mm x 203mm)

Placement Accuracy: stationary: $\pm 0.01"$ (.25mm) or moving: $\pm 0.125"$ (3mm) (for example: conveyor belt applications)

Speed: Up to 58 labels per minute, depending on the printer, applicator, height of product, etc.

Weight of Applicator: 27lbs (12kg) – 37lbs (17kg)

Weight of Stand: 120lbs (55kg)

Standard Stroke Length: 17" total (432mm) (10" (254mm) below table) on the Tamp, Tamp/Blow and Specialty Tamp. Custom length cylinders are available upon request.

Air Requirement: 75 to 90 psi (5 to 6 bar)

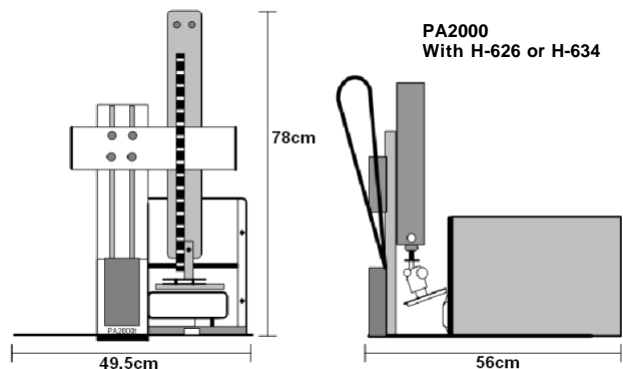
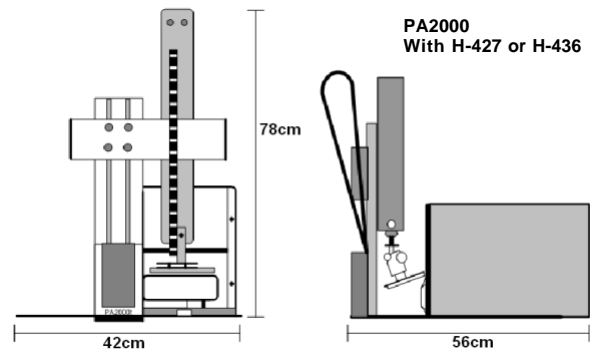
Variable Height: Pressure Sensing Switch on the Tamp allows for labeling products of different heights without adjusting the applicator.

Printer Type: Tharo H-427, Tharo H-436, Tharo H-626 or Tharo H-634 Direct Thermal/Thermal Transfer Printers

Power Source: Auto Switching 110/240VAC 50/60Hz

Environmental: 50-95°F (10-35°C) at 10-85% humidity

Standards: Built to CE safety and emissions standards.



EASYLABEL Europa

Parc d'activités des Nations - 1 rue du Portugal
67230 BENFELD - France,

Tel : +33 (0) 3 88 74 02 20 - Fax : +33 (0) 3 88 74 02 21

info@easylabel.fr - www.easylabel.fr